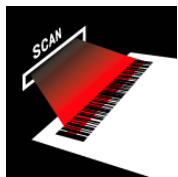


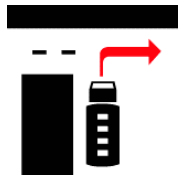
Key instructions



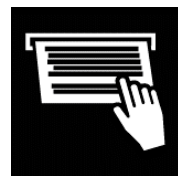
Scan barcode



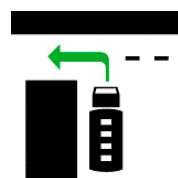
Take ticket



Leave weighbridge or go to loading station: take right / red route



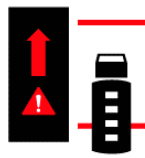
Take exit paper(s) and sign if necessary



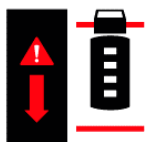
Go to exit: take left / green route. *Hand over access document (always) + exit paper or CMR1 to gate.*

Error messages require your attention

Examples:



Wrong positioning: move forward



Wrong positioning: move backward



Overload: go back to loading station

Call intercom in case further instructions needed!

*Flyer chauffeurs bulk trucks standaard proces laden/lossen
Versie: Versie 1 – 01.06.2015
Veranw. Dienst: SLD/L – BASF Antwerpen NV*

Automated BASF truck weighbridges

Bulk trucks (standard loading/unloading)

As of 29.06.2015



Automated BASF Truck Weighbridges

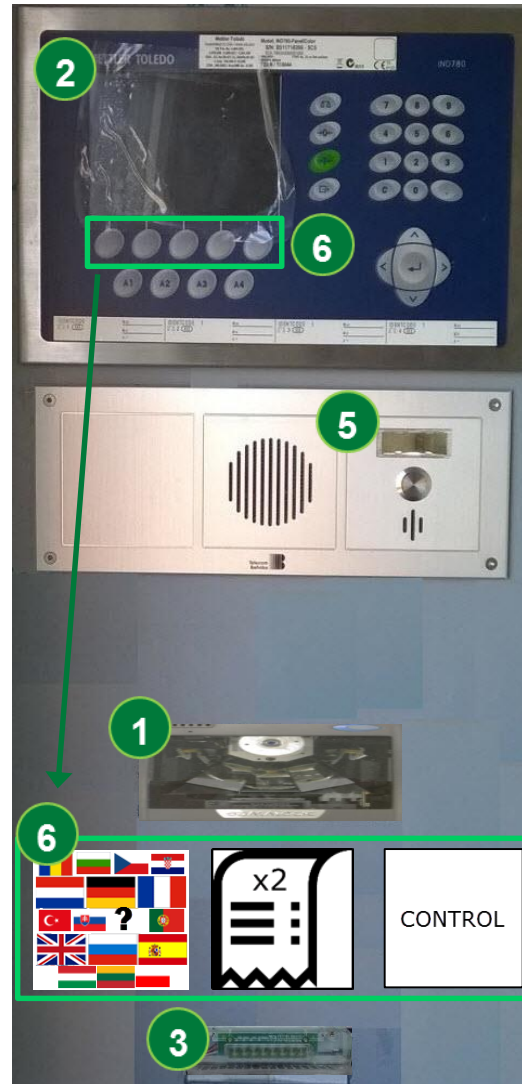
Truck weighbridges will operate automated. As a truck driver you will need to

- Know where weighbridges are **located**
- Use the **correct weighbridge** (1, 2 or 3)
 - o 1: weighing IN when driving through gate 6
 - o 2: weighing OUT and all intermediate weighings
 - o 3: emergency weighbridge (1/1/16) to be used on instruction of BASF
- **Use the barcode** for access
- **Follow the instructions** on the terminals
- **Sign** shipping papers (e.g. CMR)

Emergency rules for BASF truck weighbridges

- In case of alarm wait for pick-up by site security
- Emergency plan is on display @ weighbridges

Self-service terminal



Steps



1 Scan barcode



2 Follow instructions on display



3 Take ticket from ticketprinter in case of weighing IN / errors / control weighing



4 Take document from printer paper tray in case of weighing OUT



5 Call intercom in case of further instructions required



6 **Options via buttons:** change language, extra ticket, control weighing on request of BASF